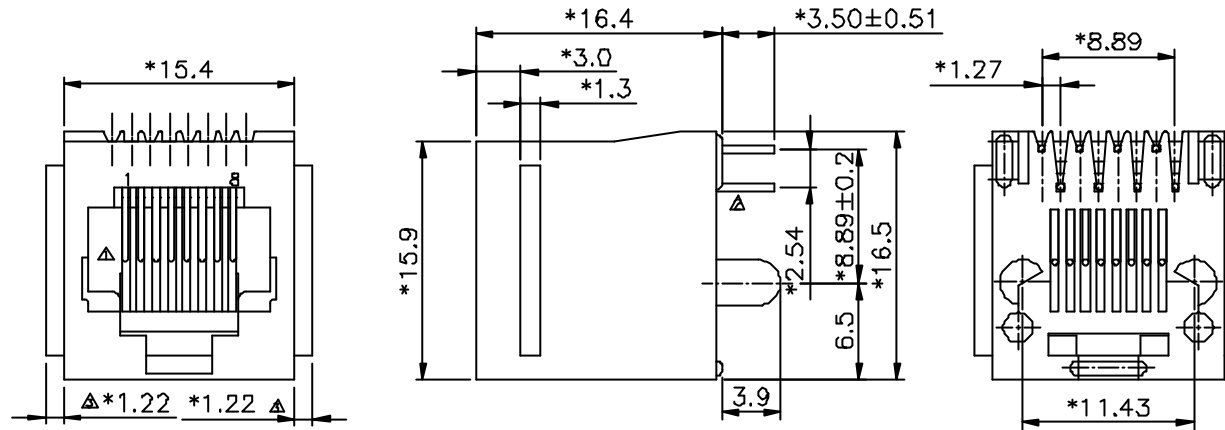


REVISION RECORD				
REV	ECD	DESCRIPTION	DRFT	CHKD
△		DRAWING MODIFY	3/4/98	
△		NOTE MODIFY	4/28/98	
△		DIM MODIFY	8/12/00	
△		ADD PART NO	5/9/02	
△		ADD PART NO	7/11/2003	
△		ADD PART NO	8/18/05	
△		DRAWING MODIFY	ANGIE	
△		ADD PART NO	03/31/06	
△		ADD PART NO	05/14/06	



NOTES:

ELECTRICAL:

1. VOLTAGE RATING: 125 VAC RMS MIN.
2. CURRENT RATING: 1.5 AMP MIN.
3. CONTACT RESISTANCE: 30 MILLIOHMS MAX.
- △ 4. INSULATION RESISTANCE: 1000 MEGOHMS MIN @ 500 VDC.
5. DIELECTRIC STRENGTH: 1000 VAC RMS 60Hz, 1MIN.

MECHANICAL:

1. HOUSING MATERIAL: GLASS FILLED POLYESTER UL94V-0.
2. CONTACT MATERIAL: PHOSPHOR BRONZE Ø0.46mm.
3. PLATING: GOLD PLATING OVER NICKEL.
4. OPERATING LIFE: 750 CYCLES MIN.
5. PCB RETENTION PRE-SOLDER: 1 LB MIN.
6. PCB RETENTION POST-SOLDER: 10 LBS MIN.

ENVIRONMENTAL:

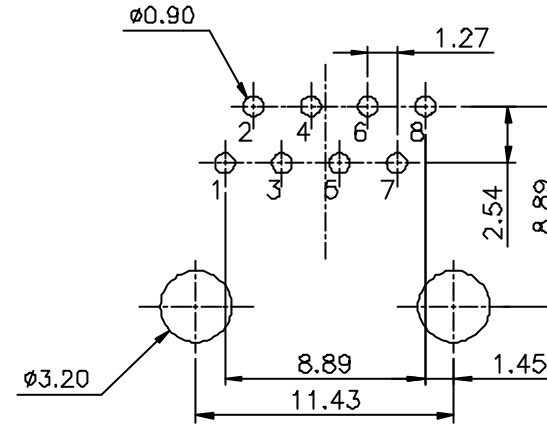
1. STORAGE: -40°C TO +85°C.
2. OPERATION: 0°C TO 70°C.

△ MATES WITH MODULAR PLUG CONFORMING TO FCC PART 68, SUBPART F.

CUL FILE NO. E163191

PART NUMBER: E5288-000XXX

- | | | |
|-----------------------|--------|-----------|
| 0-A06-0100 BLACK | 1- 3u" | 2- 6u" |
| 4-A06-0110 LIGHT GREY | 3-15u" | 4-30u" |
| 1-W/ PANEL STDP | 5-50u" | 6-Pd 20u" |
| △2-W/O PANEL STOP | | |



PC Board Layout
Component Side Shown

MIN (INCH)	DRFT	BASS	DATE	1/9/98
	CHKD	DATE		
	MFO	DATE		
	APPL. XLF	DATE	05/24/05	
TOLERANCES EXCEPT AS NOTED	MATERIAL .			
	FINISH .			
ANGLES ±	QTY :			
	SCALE : 3:1			
THIRD ANGLE PROJECTION	FULL RISE ELECTRONIC CO., LTD			
	TITLE			
TOP ENTRY PCB JACK 8P				
DRAWING NO. GE523004			SIZE	REV
/PART NO. SEE NOTE			A3	7
DO NOT SCALE DRAWING			SHEET X	OF Y